

Room Temperature Printhead

Product Description

The PH-47 is a drop-on-demand printhead that operate at room temperature. It has a glass reservoir, PTFE tubing, and PEEK fittings to interconnect with the dispensing device. Fluid can be added to the reservoir without removing the printhead assembly and unused fluid can be recovered or stored in the glass reservoir. A broad range of materials can be dispensed using these printheads, including bioactive, optically active, sensor, and other materials. Drop volumes ranging from 5 pL to as high as 0.5 nL have been dispensed.



Standard Features

- All parts cleanable / reusable.
- Large 25 mL capacity removable glass reservoir that can be used for off-line fluid storage / refrigeration.
- Unused fluid recoverable; 1 mL minimum load volume.
- Compatible with Jetlab[®], Jetlab[®] II, and Jetlab[®] 4.

Available Options

- MJ-AT devices available in orifice diameters 10-80 μ m.

Ordering Information

| | |
|---------------------|--|
| PH-47 | Room temperature drop-on-demand printhead. Includes one glass reservoir. |
| MJ-AT-01-xxx | Low-temperature device with MINSTAC threaded fluid fitting, xxx denotes orifice diameter in microns. |
| C-04 | Five (5) 25 mL capacity glass reservoirs with caps. |
| C-04a | C-04 plus one set of replacement tubing & fittings. |

Support Equipment

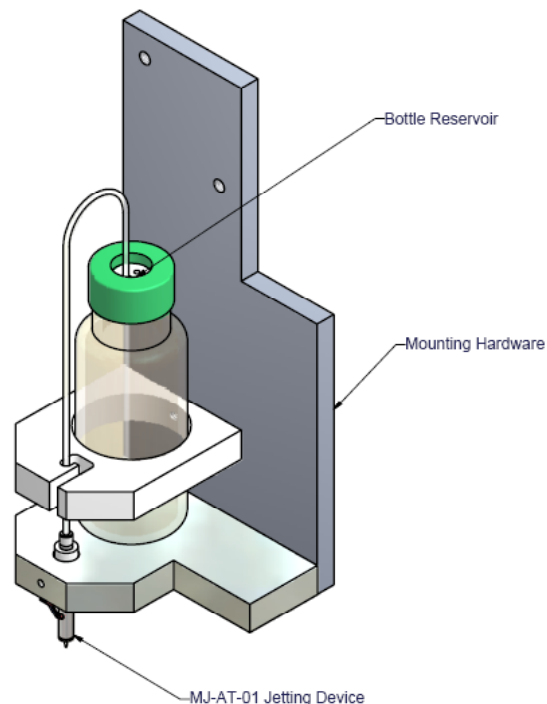
The PH-47 may be combined with the following components and subsystems to create a functional subsystem.

| | |
|-----------------|--|
| CT-M3-02 | JetDrive™ III controller, including command set and stand-alone control program. Includes built in strobe delay. Level 02 firmware (complex waveforms) included. |
| CT-PT-01 | Pressure / Thermal Controller with no temperature controllers. Includes strobe delay and LED. |
| CM-VS-01 | Horizontal Optics System: CCD camera, power supply, zoom lens. Reticle projector, right angle adapter, and fine focus included. |

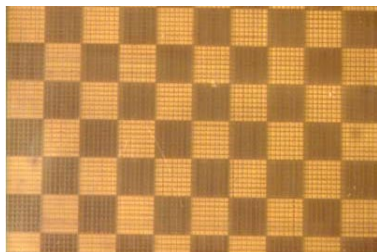
Addition Information

Links to:

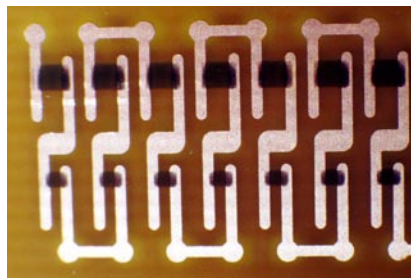
- High resolution version of exploded view: [PH-47](#).
- Assembly drawing with printhead dimensions: [PH-47](#).



Organic electronic backplane for displays.



Conductive Polymer Resistors, <math><200\Omega/\text{sq}</math>, ~1mm long.



1mm diameter biosorbable polymer nerve regeneration conduits.

